

MARVIN
ESSENTIAL®
COLLECTION

MARVIN® 

STREAMLINED DESIGN



CATALOG

Five Collections. One Legacy of Innovation.

Realize your unique vision, down to the last detail, with Marvin.

Born out of a legacy of innovation, the Marvin portfolio sets the highest standards in quality you can see and feel. Each premium collection blends inspired design and materials that perform.

Through expertly crafted architectural detailing, industry-leading engineering, and true partnership, Marvin helps open up a world of possibilities.

MARVIN
ULTIMATE™
COLLECTION



Endless Possibilities

Realize unique visions with endless design possibilities, each meticulously crafted.

INTERIORS

Wood

Six species options + custom, two painted or primed options, six stains + Clear Coat

EXTERIORS

Extruded Aluminum

19 colors + custom

Wood

Three species + custom

SIZING

Standard + custom sizing for replacement, remodeling, or new construction

HARDWARE

Extensive selection including Marvin Gallery Hardware

COASTAL + WATERFRONT

Hurricane Impact Zones 3 (IZ3) + Performance Grade 50 products (PG50)

MARVIN
MODERN™
COLLECTION



Authentically Modern

Achieve authentic modern architecture with expansive views and strong thermal performance.

INTERIORS

Extruded Aluminum

Five color options

EXTERIORS

High-Density Fiberglass

Five color options

SIZING

Custom sizing for remodeling or new construction

HARDWARE

Minimalist hardware for modern design aesthetic

COASTAL + WATERFRONT

Not available with Impact Zone (IZ) rating

MARVIN
VIVID™
COLLECTION



Boldly Innovative

Complement transitional to contemporary architecture with dramatic sizes, durability, and energy efficiency.

INTERIORS

Fiberglass Reinforced Composite

Windows: Two color options

Ultrrex Fiberglass

Doors: Two color options

EXTERIORS

Ultrrex Fiberglass

Four color options

SIZING

Standard + custom sizing for replacement, remodeling, or new construction

HARDWARE

Available in four finish options with two door handle styles

COASTAL + WATERFRONT

Not available with Impact Zone (IZ) rating

MARVIN
ELEVATE®
COLLECTION



Beauty Meets Durability

Find the most in-demand traditional window and door types with natural wood interiors and Ultrrex® fiberglass exteriors.

INTERIORS

Wood

Bare Pine, painted Designer Black, painted White, or Clear Coat

EXTERIORS

Ultrrex Fiberglass

Six color options

SIZING

Standard + custom sizing for replacement, remodeling, or new construction

HARDWARE

Available in six finish options with two door handle styles

COASTAL + WATERFRONT

Hurricane Impact Zone 3 (IZ3) + Performance Grade 50 products (PG50)

MARVIN
ESSENTIAL®
COLLECTION



Streamlined Design

Choose from a streamlined selection featuring proprietary Ultrrex fiberglass interiors and exteriors.

INTERIORS

Ultrrex Fiberglass

Four color options

EXTERIORS

Ultrrex Fiberglass

Six color options

SIZING

Standard + custom sizing for replacement, remodeling, or new construction

HARDWARE

Available in six finish options with one door handle style

COASTAL + WATERFRONT

Not available with Impact Zone (IZ) rating



Table of Contents

COLLECTION	04 Marvin Essential® Collection
	06 Ultrex® Fiberglass
	10 Designed for Pros
WINDOWS + DOORS	12 Windows + Doors Introduction
	14 Casement
	16 Awning
	18 Single Hung
	20 Double Hung
	22 Glider
	24 Picture
	26 Round Top
	28 Specialty Shapes
	30 Sliding Patio
OPTIONS	32 Options Introduction
	34 Interior + Exterior Finish Options
	35 Divided Lites + Glass
	36 Hardware
	37 Exterior Trim
	38 Simple + Efficient Installation

DIRECT GLAZE WINDOW,
SLIDING PATIO DOOR
Ebony

MARVIN
ESSENTIAL®
COLLECTION

Design and Performance Made Easier

Characterized by clean lines, powerful performance, and streamlined options, the Marvin Essential collection makes it easier to achieve design and quality. The Essential collection features durable Ultrex® fiberglass interiors and exteriors, making it virtually maintenance free.

PURE RELIABILITY

DURABLE FINISHES

STREAMLINED SELECTION

DOUBLE HUNG WINDOWS
Ebony



Ultrex Fiberglass Exteriors

Ultrex® fiberglass is a unique, proprietary material that significantly outlasts and outperforms vinyl and vinyl/wood composite materials while offering unmatched durability and timeless style. This state-of-the-art material was developed by Marvin and is featured on the interiors and exteriors of the Marvin Essential® collection.

Marvin uses Ultrex fiberglass because the material you choose for your windows matters. Ultrex is strong, stable, has a durable acrylic finish, and is energy efficient.

Strength

The strength of Ultrex fiberglass translates into long-term ease of operation, minimal maintenance, and superior performance.

Stability

By expanding and contracting at nearly the same rate as glass, Marvin windows and doors made with Ultrex fiberglass are more resistant to leaks and seal failures.

Finish

The proprietary acrylic finish is 3x thicker than competitive painted options, and resistant to chipping, chalking, or fading.

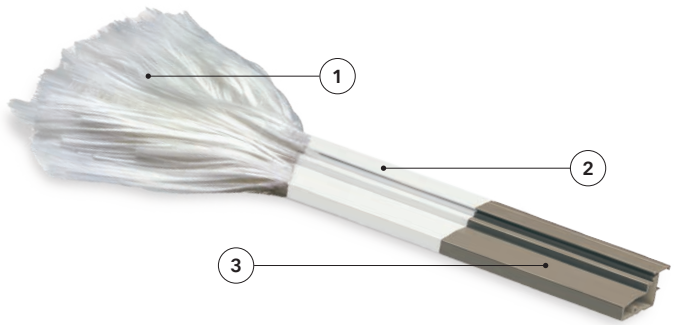
Energy Efficiency

Ultrex fiberglass combined with energy-efficient glass options can help manage the amount of light and heat entering and leaving your home.



How It's Made

Ultrex fiberglass is a composite material made of fine glass fibers woven into a cloth then bonded together with a formulated polyester resin. The continuous strands of fiberglass give Ultrex its strength in resisting breakage.



1

Raw Fiberglass Strands

Thin strands of strong glass cables are saturated with specifically compounded resins.

2

Pultruded Fiberglass

The strands are pulled through a heated die and cut with diamond-edged blades to form Ultrex fiberglass.

3

Proprietary Acrylic Finish

A proprietary acrylic finish is then applied; it's smoother and 3x thicker than other brands.

Strength Matters

Ultrex fiberglass is 8x stronger than vinyl and has a low thermal expansion rate. It is heat resistant, non-corrosive, and has low conductivity.

Ultrex fiberglass bends and flexes less than vinyl. This helps maintain the window seals and operation year after year.

The strength of Ultrex fiberglass allows for a reduced frame thickness that supports more visible glass, creating a larger view.

Durable material weathers better against everyday wear and stands the test of time.

ULTREX FIBERGLASS IS

8x

stronger than vinyl

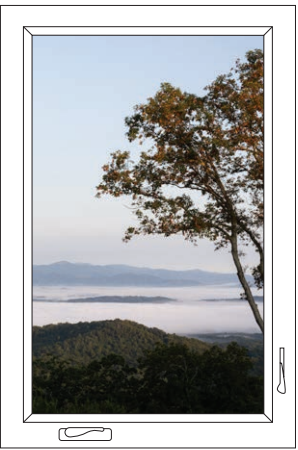
3x

stronger than Fibrex®



More Glass, More Value

This resistance to bending means we can reduce the frame thickness without impacting the window's structural integrity. This allows for more glass, expansive views and daylight openings, and less window frame.



Ultrex fiberglass provides larger views



Thicker vinyl profiles can restrict views

Stability You Can Count On

Constant expansion and contraction can gradually break down windows and doors, causing leaky seals, poor operation, and loss of structural integrity.

Ultrrex® fiberglass expands and contracts at virtually the same rate as glass, so Marvin Essential® windows and doors stay tight and true over time, resisting air leaks, seal failures, and stress cracks that can compromise energy efficiency and long-term performance.

This low rate of expansion and contraction also allows windows and doors to open and close on demand without sticking or binding from swelling, warping, material distortion, or deformation from the heat.

A Long-Term Finish

Marvin Ultrrex fiberglass finish is verified to the American Architectural Manufacturers Association (AAMA) 624 specification. Achieving AAMA 624 verification means that our finish has passed rigorous tests that simulate the harsh conditions encountered throughout the life of a window or door.

Ultrrex fiberglass uses an acrylic finish that is paintable, fade resistant, and virtually maintenance free. With a finish that’s 3x thicker than competitive painted options, it resists chipping, denting, and peeling.

ULTRERX FIBERGLASS HAS

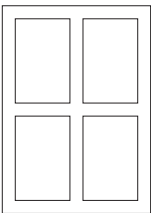
75%

less expansion than Fibrex®

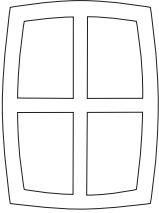
87%

less expansion than vinyl

IN EXTREME WEATHER CONDITIONS



Ultrrex fiberglass stays true



Vinyl can expand

Lasting Performance

Proprietary Ultrrex fiberglass finish resists scratches, chalking, and fading—even in dark colors

Exteriors can be painted to match any home

Virtually maintenance free – no sanding, scraping, or painting care needed

Finish is 3x thicker than competitive painted options

Energy Efficiency

The low thermal conductivity and superior performance of Ultrrex fiberglass combine with a selection of energy-efficient glazing (glass) options that help manage the amount of light and heat entering and leaving your home.

Top-Rated Efficiency

Windows and doors with low conductivity reduce heat loss in homes, which translates to lower energy bills.* Ultrrex fiberglass provides an insulated barrier against extreme weather temperatures, keeping homes comfortable and reducing heating and cooling costs.

Energy Savings

Low-E glass coatings are designed to reflect heat, keeping homes cooler in the summer and warmer on winter nights while also blocking harmful UV rays and reducing energy costs.

Low-E coatings have three main functions:

Insulation (energy efficiency)

By reflecting heat, the coating significantly reduces solar heat gain in summer and heat loss in winter, helping to maintain a stable indoor temperature.

Solar Control (heat gain reduction)

In warm weather, the coating reflects short-wave infrared energy from the sun away from the building, which helps keep indoor spaces cooler by blocking solar heat gain.

UV Protection (reduces UV damage)

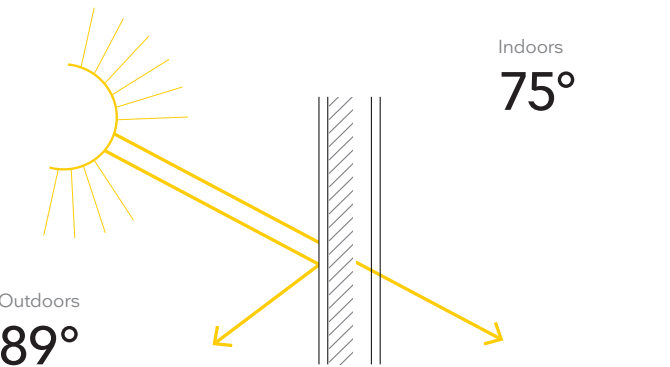
The coating reduces a significant percentage of harmful UV rays, helping prevent fading of furniture, rugs, and other interiors.

* Replacing old windows with ENERGY STAR certified windows lowers household energy bills by an average of up to 13% nationwide when replacing single-pane windows. Lower energy consumption also reduces greenhouse gas emissions from power plants and homes.
https://www.energystar.gov/products/res_windows_doors_skylights



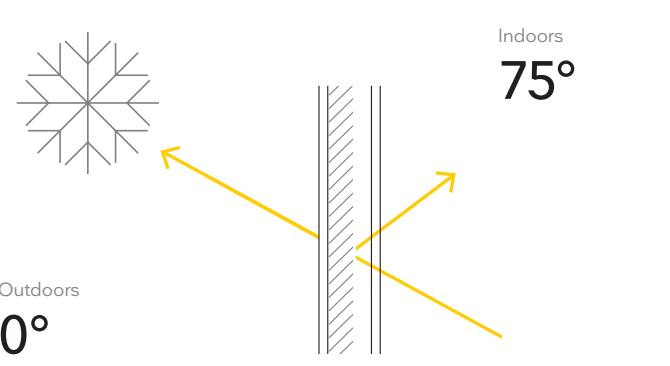
SUMMER DAY

LOW-E GLAZING



WINTER NIGHT

LOW-E GLAZING



Designed With Pros in Mind

Every project has its own unique requirements, and Marvin is equipped to meet those challenges. Our unique Ultrex® fiberglass material, available factory services, and network of dedicated service and support personnel make the Marvin Essential® collection the perfect choice – no matter the project.

fig. 1 **DOUBLE HUNG WINDOWS**
Ebony

fig. 2 **AWNING, CASEMENT,
PICTURE WINDOWS**
Ebony



fig. 1

Easy to Order, Simple to Install

The Essential collection offers simplified options to make the order process straightforward. Installation options and accessories make installing Marvin easier than ever.



fig. 2

Full Warranty Coverage

A family-owned and -led company with a legacy of innovation since 1912, Marvin backs its products with industry-leading warranties. The Essential collection is backed by a fully transferable 20/10 warranty, 20-year coverage on glass, and 10-year coverage on manufacturing materials and workmanship.

Windows + Doors

The Marvin Essential® collection combines a streamlined selection of durable windows and doors with easy installation, minimal maintenance, and straightforward features. All Essential windows and doors feature Ultrex® fiberglass interiors and exteriors for minimal maintenance.

DOUBLE HUNG WINDOWS
Ebony



A House Among the Pines

Combining elements of Nordic and Japanese design, Svart Hus was built to blend in with the natural world. Learn more on the Marvin Inspiration blog.



marvin.com/svart-hus

Casement

The Marvin Essential® Casement window is a side-hinged option built for smooth operation with a concealed multi-point locking system. Available in large sizes for ample daylight and clean sightlines.



fig. 1

- fig. 1 **CASEMENT, CASEMENT
TRANSOM WINDOWS**
Stone White
- fig. 2 **INTERIOR VIEW**
Stone White
- fig. 3 **EXTERIOR VIEW**
Gunmetal
- fig. 4 **CASEMENT WINDOWS**
Ebony



fig. 2

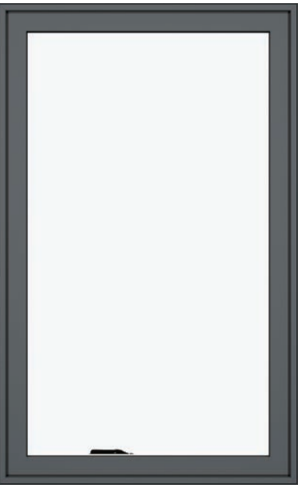


fig. 3



fig. 4

FEATURES

Made of strong, durable Ultrex® fiberglass to meet required performance ratings and remain virtually maintenance free for years

Available in standard and special sizes up to 3' wide by 7' high

Coordinating Casement Picture window available in heights up to 7'; Casement Transom window available up to 6' wide by 2' high

Multi-point sequential locking system provides superior PG40 performance rating with single lever operation

Stationary, crank-out operating, direct glaze rectangle, and picture units available

Folding handle provides easy operation and neatly stows out of the way of window treatments and blinds

Features an easy-to-remove screen with concealed fasteners

Awning

The Marvin Essential® Awning window is the perfect low-maintenance solution for increasing your home’s ventilation. Streamlined features and design options can be tailored to reflect your home’s architecture and character.

- fig. 1* **AWNING WINDOWS**
Ebony
- fig. 2* **INTERIOR VIEW**
Stone White
- fig. 3* **EXTERIOR VIEW**
Gunmetal
- fig. 4* **AWNING WINDOW**
Ebony



fig. 1



fig. 2



fig. 3



fig. 4

FEATURES

- Made of strong, durable Ultrex® fiberglass to meet required performance ratings and remain virtually maintenance free for years
- Available in standard and special sizes up to 5' wide by 4' high
- Multi-point sequential locking system provides superior PG40 performance rating with single lever operation
- Stationary, crank-out operating, direct glaze rectangle, and picture units available
- Folding handle provides easy operation and neatly stows out of the way of window treatments and blinds
- Features an easy-to-remove screen with concealed fasteners

Single Hung

The Marvin Essential® Single Hung window mimics the classic, simple design of the Essential Double Hung but with a bottom sash that raises for ventilation and a top sash that remains stationary.

- fig. 1* **SINGLE HUNG WINDOWS**
Stone White
- fig. 2* **INTERIOR VIEW**
Stone White
- fig. 3* **EXTERIOR VIEW**
Gunmetal
- fig. 4* **SINGLE HUNG WINDOW**
Stone White



fig. 1

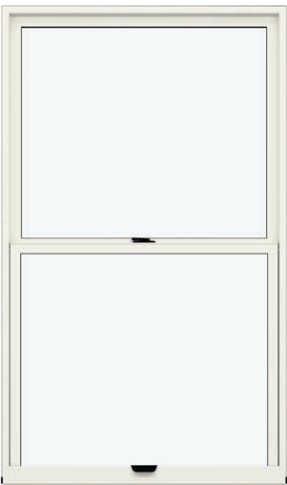


fig. 2

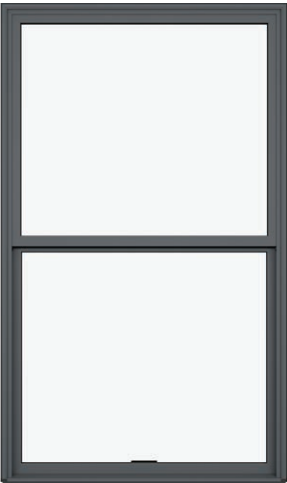


fig. 3



fig. 4

FEATURES

Made of strong, durable Ultrex® fiberglass to meet required performance ratings and remain virtually maintenance free for years

Features a fixed top sash and a movable bottom sash for a traditional double hung look; lower sash removes easily, with no strings or cords to detach

Standard and special sizes up to 4' wide by 6'6" high; Coordinating picture and transom windows available in sizes up to 5' wide by 6' high

Equal, Cottage, and Reverse Cottage sashes provide a variety of looks and checkrail heights

Up to PG50 performance rating

Lower sash lock engages noticeably, reassuring the user that the window is either locked or unlocked

Factory, reinforced, and field mulling kits available

Comes with a standard aluminum half screen; optional full screen available

Double Hung

With two movable sashes, the versatile Marvin Essential® Double Hung window can create ventilation at the top, bottom, or both. It offers a classic look and operation combined with low-profile design.

- fig. 1* **DOUBLE HUNG WINDOWS**
Stone White
- fig. 2* **INTERIOR VIEW**
Stone White
- fig. 3* **EXTERIOR VIEW**
Gunmetal
- fig. 4* **DOUBLE HUNG WINDOWS**
Stone White



fig. 1



fig. 2

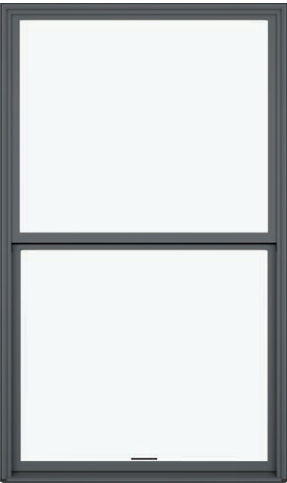


fig. 3



fig. 4

FEATURES

- Made of strong, durable Ultrex® fiberglass to meet required performance ratings and remain virtually maintenance free for years
- Offers maximum circulation when both sashes are open
- Available in standard and special sizes up to 4' wide by 6'6" high; coordinating picture and direct glaze rectangle windows available in sizes up to 5' wide by 6' high
- Up to PG50 performance rating on majority of sizes
- Equal, Cottage, and Reverse Cottage sashes provide a variety of looks and checkrail heights
- Both sashes tilt and remove for easy cleaning; tilt latches are ergonomically designed and easy to operate, making tilting and cleaning effortless
- Factory, reinforced, and field-mulling kits available
- Comes with a standard aluminum full screen; optional half screen available

Glider

The Marvin Essential® Glider window offers a perfect space-saving alternative when a swinging sash is not practical. This versatile window is optimized for smooth horizontal movement with operable panels that tilt inward for easy cleaning.

fig. 1 GLIDER WINDOW
Ebony

fig. 2 INTERIOR VIEW
Stone White

fig. 3 EXTERIOR VIEW
Gunmetal

fig. 4 GLIDER WINDOW
Ebony



fig. 1



fig. 2



fig. 4



fig. 3

FEATURES

Made of strong, durable Ultrex® fiberglass to meet required performance ratings and remain virtually maintenance free for years

Dual and triple sash options available; triple sash with fixed center panel option provides the appearance of a picture window assembly

Available in standard and special sizes up to 6' wide by 5' high for dual sash and 8' wide by 5' high for triple sash

PG25 performance rating on triple sash and up to PG40 performance rating on dual sash

Operating sash easily tilts and removes with no cords or strings to detach; tilt latches are ergonomically designed and easy to operate, making tilting and cleaning effortless

Innovative screen design for easy installation and removal

Picture

The Marvin Essential® Picture window is a stationary option where glass meets the frame directly for a simple profile. Available in direct glaze or in-sash to meet your design needs, this fixed window offers strength – even at large sizes – thanks to a strong, durable Ultrex® fiberglass interior and exterior.



fig. 1

- fig. 1 **DIRECT GLAZE PICTURE WINDOWS**
Ebony
- fig. 2 **INTERIOR VIEW**
Stone White
- fig. 3 **EXTERIOR VIEW**
Gunmetal
- fig. 4 **DIRECT GLAZE PICTURE WINDOWS**
Ebony

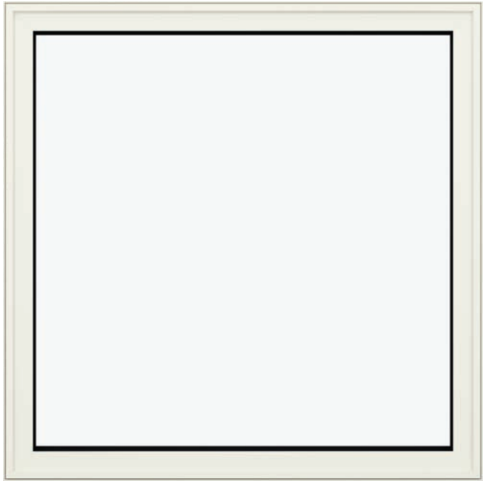


fig. 2



fig. 3



fig. 4

FEATURES

Direct Glaze:

- Glass meets the frame directly without a sash for a simple, clean profile with more glass area
- Available in sizes up to 9'6" wide by 9'6" high, not to exceed 49 square feet

In-Sash:

- Designed to match profiles of operable windows in the Essential collection
- Casement picture window available in sizes up to 7' high
- Double Hung Picture window available in sizes up to 5' wide by 6' high

Round Top

The Marvin Essential® Round Top window is available in quarter-round, half-round, and elliptical styles, offering design flexibility – plus, the same performance and durability as other windows in the Essential collection.



fig. 1

- fig. 1 **ROUND TOP WINDOWS**
Ebony
- fig. 2 **INTERIOR VIEW**
Stone White
- fig. 3 **EXTERIOR VIEW**
Gunmetal
- fig. 4 **ROUND TOP SHAPES**

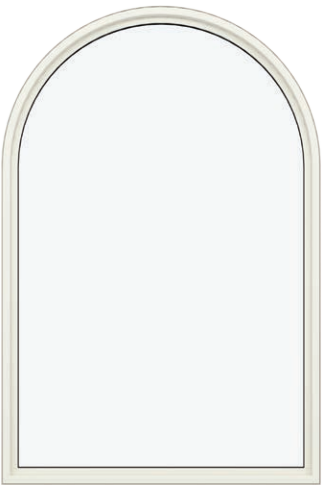


fig. 2

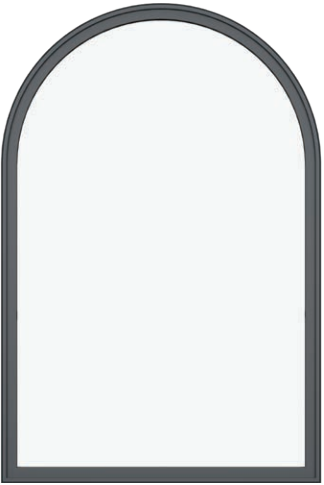


fig. 3

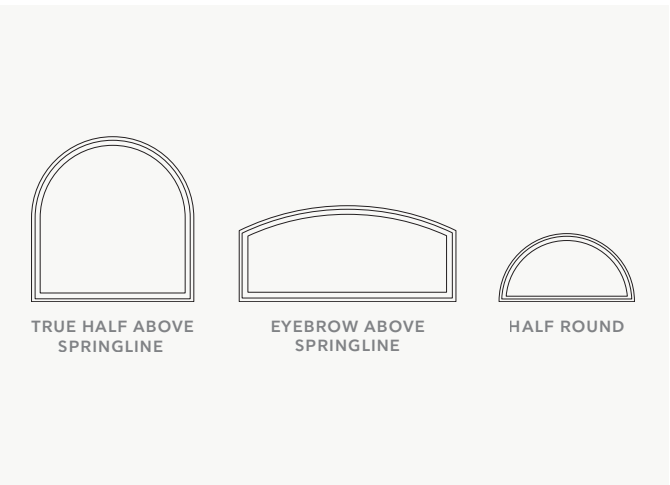


fig. 4

- FEATURES**
- Made of strong, durable Ultrex® fiberglass to meet required performance ratings and remain virtually maintenance free for years
 - Standard and special sizes up to 8' wide and up to 7' high, depending on shape
 - Up to PG50 performance rating
 - Perforated folding radius nailing fin provides for simple installation and proper water management
 - Available nailing fin, installation bracket, and through-jamb installation
 - Available factory and field mulling options

Specialty Shapes

The Marvin Essential® Specialty Shape windows offer eight unique shape options. Use them as sidelights and transoms, or combine them to create a stunning wall of fixed windows.



fig. 1

- fig. 1 **DIRECT GLAZE POLYGON WINDOWS**
Ebony
- fig. 2 **INTERIOR VIEW**
Stone White
- fig. 3 **EXTERIOR VIEW**
Gunmetal
- fig. 4 **SPECIALTY SHAPES**

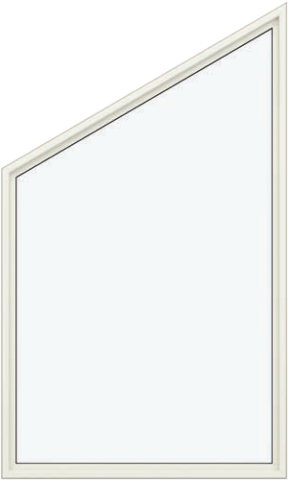


fig. 2

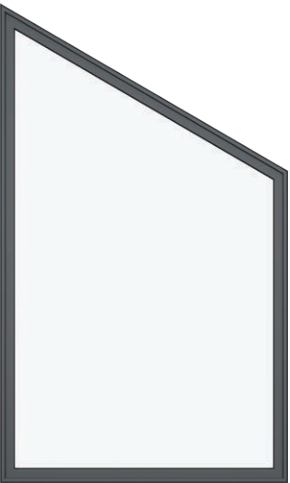


fig. 3

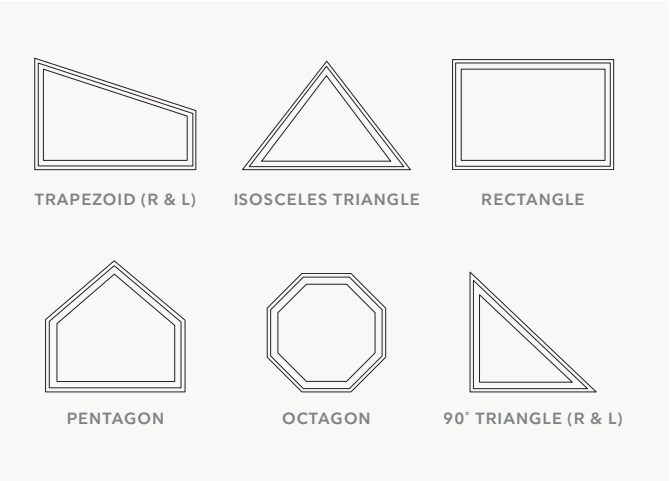


fig. 4

- FEATURES**
- Made of strong, durable Ultrex® fiberglass to meet required performance ratings and remain virtually maintenance free for years
 - Available in sizes up to 49 square feet; longest leg may not exceed 9'5"
 - PG50 performance rating
 - Jambs are available factory applied or in an extension kit in 4-⁹/₁₆" and 6-⁹/₁₆" sizes
 - Perforated folding radius nailing fin provides for simple installation and proper water management
 - Factory, reinforced, and field mulling kits available

Sliding Patio Door

The Marvin Essential® Sliding Patio door offers clean lines, more glass, and reliable, effortless operation for years to come. Optimize operation and visibility with two- or three-panel options. Pair it with coordinating Picture rectangle windows for even more impressive views.



fig. 1

- fig. 1 **SLIDING PATIO DOOR**
Bronze
- fig. 2 **INTERIOR VIEW**
Stone White
- fig. 3 **EXTERIOR VIEW**
Gunmetal
- fig. 4 **SLIDING PATIO DOOR**
Ebony

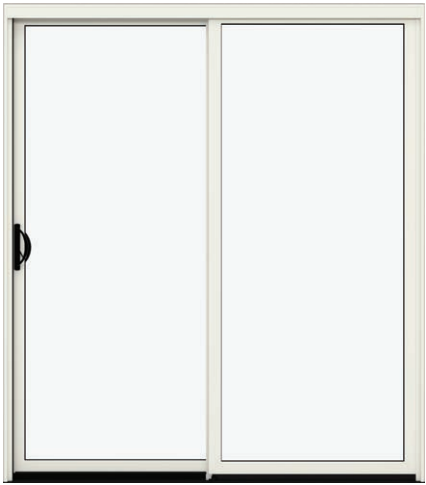


fig. 2



fig. 3



fig. 4

FEATURES

Made of strong, durable Ultrex® fiberglass to meet required performance ratings and remain virtually maintenance free for years

Available in standard and special sizes up to 8' wide by 8' high for two-panel configurations and 9' wide by 8' high for three-panel configurations

Coordinating direct glaze rectangle windows available

Up to PG30 performance rating

Standard tempered Low E2 insulated glass with argon gas; optional Low E1, Low E2/ERS, Low E3, and Low E3/ERS meet diverse energy-efficiency needs

Matching handle set design provides style and security; optional slim handle provides 32" net clear opening on certain two- and three-panel configurations to meet accessibility needs

Top-hung sliding screen operates smoothly without jamming

Options

Designed with ease and versatility in mind, the Marvin Essential® collection features durable, long-lasting finishes paired with a streamlined selection of straightforward features that fit a range of different styles and project types.

CASEMENT, DIRECT GLAZE WINDOWS
Ebony

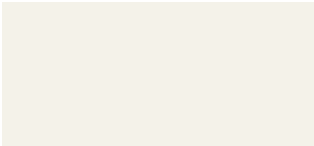


Interior and Exterior Finish Options

Marvin Essential® windows and doors have durable, strong Ultrex® fiberglass interiors and exteriors, featuring our AAMA-verified acrylic finish for low maintenance and superior aesthetics.



FIBERGLASS INTERIOR COLORS



STONE WHITE
Available with your choice of exterior colors



BRONZE
Available when paired with Bronze exterior

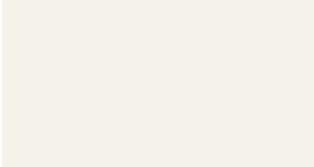


GUNMETAL
Available when paired with Gunmetal exterior



EBONY
Available when paired with Ebony exterior

FIBERGLASS EXTERIOR COLORS



STONE WHITE



CASHMERE



PEBBLE GRAY



BRONZE



GUNMETAL



EBONY

Divided Lites

Grilles-Between-the-Glass (GBG)

Available in several popular lite cut options for a classic divided lite look and easy glass cleaning.* Select from Stone White, Bronze, Gunmetal, or Ebony interior finish and Stone White, Cashmere, Pebble Gray, Bronze, Gunmetal, or Ebony exterior finish. Divided lites available on select Essential prodcuts.



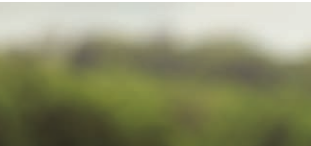
Glass Options

Available in dual-pane in Low E1, Low E2, Low E2/ERS, Low E3, and Low E3/ERS insulated glass with argon gas.† Options include glazing for sound abatement (STC/OITC), high altitudes, and California fire zones.

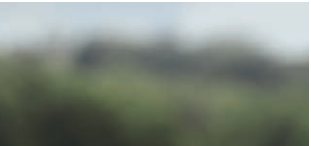
SPECIALTY GLASS OPTIONS



FROSTED



BRONZE TINT



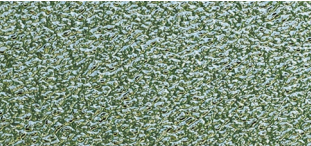
GRAY TINT



GREEN TINT



REED



OBSCURE



GLUE CHIP



RAIN

* For more options, visit marvin.com
† Argon gas not available in high elevations where capillary tubes are required.

Hardware Options

Window Hardware

Marvin Essential® windows feature classic low-profile, durable hardware for clean aesthetics, safety, and security.*

SASH LOCK + KEEPER



Available on Double Hung and Glider windows

FOLDING HANDLE



Available on Casement and Awning windows

Door Handles

Hardware for the Essential Sliding Patio door is available in the Cambridge collection, and offers the perfect blend of safety, security, and a classic low-profile look.

CAMBRIDGE



Available keyed-alike option (use one key on multiple locks, with up to three different keys on each project).

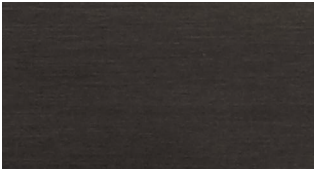
Choose a distinct interior and exterior handle finish that matches or complements the interior and exterior color of your door.

The Slim Line handle allows a 32" net clear opening when used on a 6' wide, two-panel sliding patio door to meet accessibility needs. It is only available in White, Almond Frost, Matte Black, and Bronze.

SLIM LINE EXTERIOR



HARDWARE FINISH OPTIONS



OIL RUBBED BRONZE (PVD)



SATIN NICKEL (PVD)



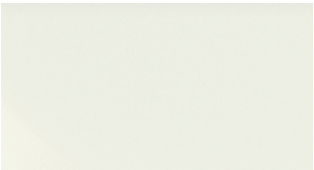
BRASS (PVD)



MATTE BLACK



ALMOND FROST



WHITE

PVD FINISHES

The Physical Vapor Deposition (PVD) process adds a layer of toughness to hardware exposed to environmental factors like direct sun and humidity. PVD finishes resist fading and discoloration, even in coastal areas. PVD has the highest grade corrosion-resistant finish. PVD finish is available on exterior door hardware in Oil Rubbed Bronze, Satin Nickel, and Brass.

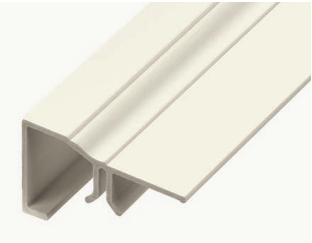
* For more options, visit marvin.com

Exterior Trim Options

Ultrex® fiberglass exterior trim is offered with all rectangular Marvin Essential products in six exterior finishes. The durability, performance, and look of Essential collection windows and doors can be extended to the trim.



EXTERIOR TRIM OPTIONS



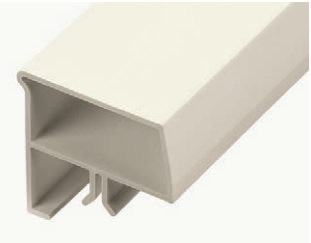
Brick Mould

2" Brick Mould is available with or without 2-1/8" sill nosing.



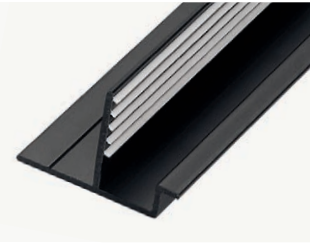
Flat Trim

3-1/2" Flat Trim is available in Flat and Flat Ranch configurations with or without 2-1/8" sill nosing.



Sill Nose

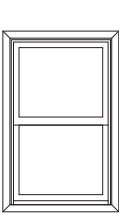
2-1/8" Sill Nose provides authentic sill appearance.



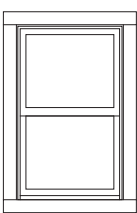
Connection Barb

Barb and receiver attachment method provides for quick, secure installation.

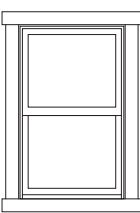
WINDOW TRIM CONFIGURATIONS



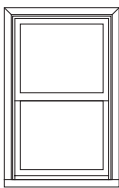
BRICK MOULD



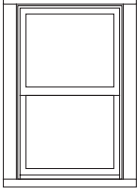
FLAT



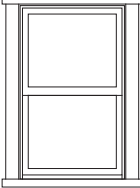
FLAT RANCH



BRICK MOULD WITH SILL NOSE

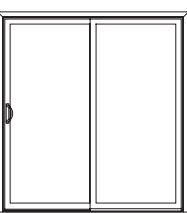


FLAT WITH SILL NOSE

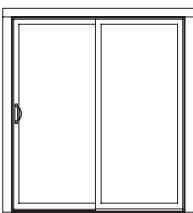


FLAT RANCH WITH SILL NOSE

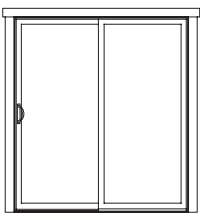
DOOR TRIM CONFIGURATIONS†



BRICK MOULD



FLAT



FLAT RANCH

† Sill profiles are not included for door trim sets.

Simple and Efficient Installation

Marvin Essential® windows and doors bring together design, quality, and performance in one streamlined collection. Essential products offer a number of installation options and accessories that make it easy to meet project demands.



<p>Nailing Fin</p> <p>Snaps out for easy installation</p>		<p>Casement/Awning 3" Sash Limiter</p> <p>Permanently limits sash movement for safety and security</p>	
<p>Jamb Extension</p> <p>Allows for easy finishing with traditional molding and trim</p>		<p>Single/Double Hung Sash Limiter</p> <p>Permanently limits sash movement for safety and security</p>	
<p>J-Channel</p> <p>Quickly and easily finishes the exterior</p>		<p>Non-Operable Lock</p> <p>Renders sash inoperable</p>	
<p>Sheetrock Return</p> <p>Accommodates 1/2"-5/8" drywall installations</p>		<p>Glider WOCD</p> <p>Limits opening to 4" while providing for full egress. ASTM F2090-10 compliant.</p>	
<p>3/4" Receiver</p> <p>Works with thicker installation methods, including box jambs</p>		<p>Casement WOCD</p> <p>Limits opening to 4" while providing for full egress. ASTM F2090-10 compliant.</p>	
<p>Frame Expander</p> <p>Provides installation flexibility</p>		<p>Double/Single Hung WOCD</p> <p>Limits opening to 4" while providing for full egress. ASTM F2090-10 compliant.</p>	



MARVIN ESSENTIAL®
DOUBLE HUNG,
DIRECT GLAZE WINDOWS
Ebony



Since 1912, Marvin has been a family-owned and -led company, with a legacy of innovation and commitment to the highest quality. We understand the unique opportunity windows and doors have to improve our spaces and how we feel in them. That's why we never stop pushing what's possible and inventing new solutions to channel fresh air, enhance light quality, and connect with the world around us.

MARVIN.COM

© 2026 Marvin Lumber and Cedar Co., LLC. All rights reserved.
® Registered trademark of Marvin Lumber and Cedar Co., LLC.

ENERGY STAR® and the ENERGY STAR certification mark are registered US marks.

Fibrex® is a registered trademark of Andersen Corporation.
Fibrex data: Andersen® (2007). Fibrex® Manual: A High Performance, High Value Biofiber Polymer Composite Technology. Renewal by Andersen® (2008). Fibrex® Material: A Better Alternative, A Better Window.

Part 19981901. January 2026.

Cover Image: Marvin Essential® Direct Glaze, Double Hung windows

Colors shown in printed materials are simulations and may not precisely duplicate product or finish colors. Contact your local Marvin dealer to view actual product and finish color samples.