

SUMMER SPACE PORCH PANELS

Complete Field Installation Instruction Guide



For assistance Call:

1 (207) 795-6536

Futureguard Building Products

101 Merrow Road, Auburn, Maine 04210

www.futureguard.net

PPV2

BEFORE YOU BEGIN:

- 1 Unbox all components and hardware. Lay out in an organized manner to ensure all components are present.
- 2 It is paramount that the openings to be filled are level and square. If the openings are out of square, the Panels can rack out of plumb. If a square opening is not available, you will be required to use shims to ensure the Panels remain properly squared.
- 3 Plan your layout. Make sure the required Panels are assembled and installed in their appropriate location.

PANEL INSTALLATION:

- 1 If your opening requires multiple Panels, join them before fitting into the opening.
 - Secure the Panels together by passing an **F25** Allen drive bolt through the panels in the pre-drilled locations in the Active Window Section. Attach using an **F17B** Square nut.
 - Ensure that the nut remains squared and properly bottomed in the channel when tightening.

Do not over tighten! Maximum of 10ft/lbs! The use of hand tools *only* is recommended!



2

Fit the Panel assembly into the appropriate opening.

- Ensure the Panel assembly is level and square in its opening. The use of shims may be necessary to adequately level the Panel.
- If shims are employed, all fasteners *MUST* be run through the shims to prevent deformation of the Panel.

PLEASE NOTE: It is the responsibility of the installer to use appropriate fasteners for the mounting surface.

Secure the Panel assembly to the lower mounting surface.

3

Secure the Panel inside the opening using appropriate fasteners, using shims where necessary. (Note- if securing to a deck, the Panel *MUST* be secured to the joists; do not rely on the deck boards themselves)

- Drill up to 1/4" clearance holes as needed through the center of the v-notch in the Horizontal Rail and insert your fasteners



For Panels equipped with a sliding glass base section, or for SummerSpace sliding doors:

- Predrill a clearance hole, up to 1/4", at the center of one of the window channels.
- Secure using an appropriate low-profile fastener, countersinking as necessary to ensure proper function of the sliding windows or doors.

Futureguard Building Products

101 Merrow Road, Auburn, Maine 04210

www.futureguard.net

PPV2

PORCH PANEL INSTALLATION INSTRUCTIONS



4

Individually remove the black gasket on the **horizontal** fixed panel temp retainers. Then, remove the temp retainers by pressing the top of the inwards towards the glass or aluminum kick plate. It should pop out easily. (**Do not use blunt force!**)

Caution: Do not remove temp retainers on more than one side at a time. Fixed glass or aluminum should be supported on three sides at all times.



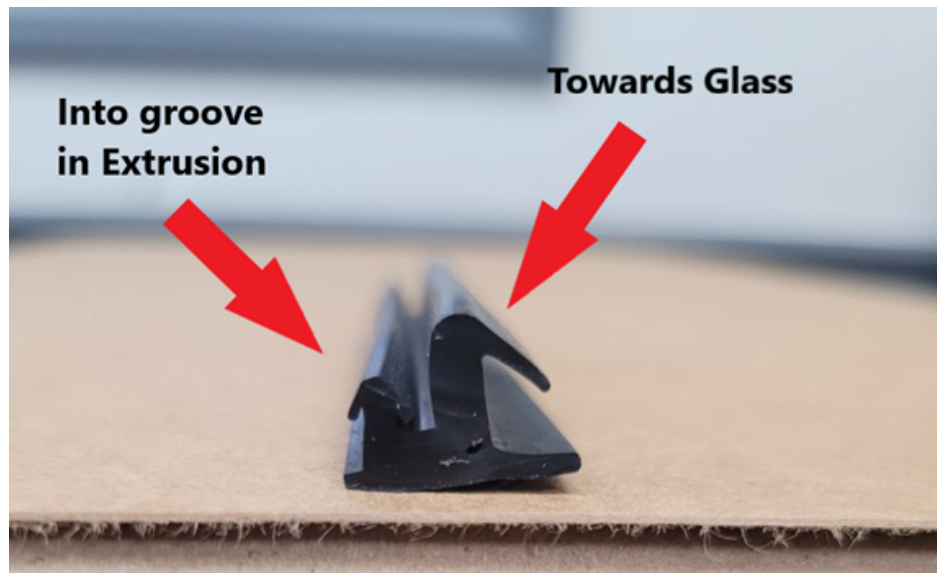
5

Install the permanent retainer. Place the retainer into the inner channel and press the front of the Cover down until it snaps into place. (**Do not use blunt force!**)



6

Install the gasket. Press into place, making sure the smaller spline fits into the groove in the retainer and the larger spline is towards the glass or aluminum kick plate. (It may be necessary to trim the excess gasket)



7

Secure the Panel to the upper mounting surface.

- Drill up to a 1/4" clearance hole in the v-channel inside the Upper Window Track for each fastener to be used.
- Use shims as necessary to ensure that the Panel remains square, secure using appropriate fasteners. Note that if shims are employed, all fasteners **MUST** be run through the shims to prevent deformation of the Panel.

8

Secure the panel through the vertical posts by utilizing the predrilled holes in the vertical sections.



Alternately, if these holes are unsuitably placed for your mounting surface, you may drill up to a 1/4" clearance hole through the v-notch of the center channel.



9

Use an appropriate number of fasteners for the mounting surface.

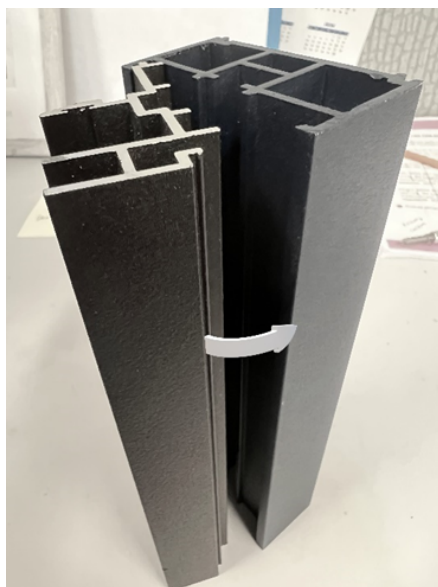
Do not overtighten your fasteners or damage to the panel WILL occur! If using shims, you MUST secure the panel THROUGH the shims to prevent deformation of the panel.

10

Install the **FG200** & **FG201** Vertical Window Rails, making sure they are oriented so that the screen channel is on the outside of the panel, and the window sashes will operate in a 'right over left' manner.



Insert the towards the inside first, then snap the outside into place.



Fasten using two of the included **F19** Phillips screws in their pre drilled locations at each end of the Vertical Window Rails

Futureguard Building Products

101 Merrow Road, Auburn, Maine 04210

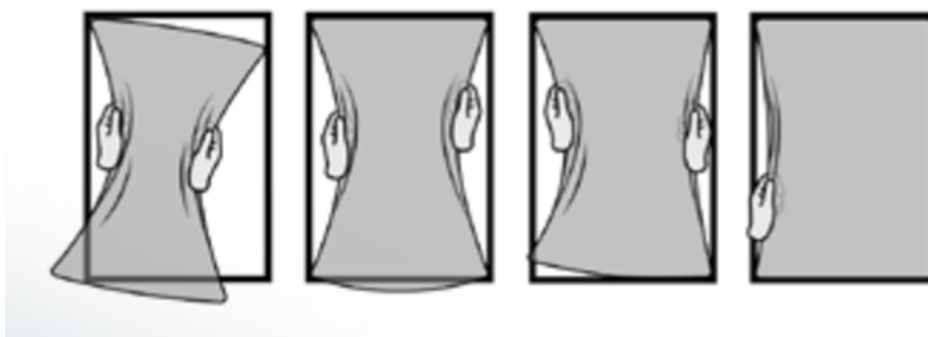
www.futureguard.net

PPV2

11

Install your screens. SummerSpace Panels are equipped with FlexScreens, allowing for easy installation and removal. Compress the screen, align with the track and release. Be sure to have the 'flush' side of the screen facing the outside of the room to maintain a seamless appearance.

- Screen locations are labeled on the perimeter of the screens frame. Example "A1M" - A1 panel, Main section.



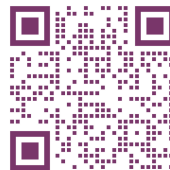
12

Install the Window Sashes, if equipped. Press the upper edge of the window into the groove in the Upper Window Track and push the bottom edge forward onto the lower track. Be sure to install the windows in the correct 'right over left' manner.



SummerSpace Sliding Door Assembly

Scan For Video Tutorial



- SummerSpace Sliding Doors that are greater than 84" in width will require assembly on-site.
- 1 Determine the orientation of the **FG199** Vertical Door Sections. (Make sure the fins align with the grooves in the adjacent panels)
- 2 Lay the **FG199** Verticals down on a padded or scratch resistant surface, such as a sheet of cardboard or a moving blanket
- 3 Lay out the **FG207** Lower Threshold in the appropriate orientation, with the **weepole channels facing out**.

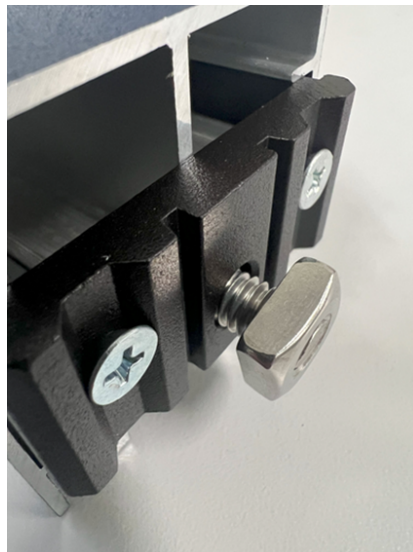


PORCH PANEL INSTALLATION INSTRUCTIONS



4

Loosely screw **F17B** Square Nuts onto the protruding bolts at each end of the Lower Threshold, leaving enough room for the nut to slide into the channel in the **FG199** Verticals.



5

Slide the Lower Threshold into the Verticals until it is flush and square with the lower edges of the Verticals.

- Tighten the Allen bolt. Be sure that the Lower Threshold does not rock out of square as you tighten the bolt.

Do not over tighten! Maximum of 10ft/lbs! The use of hand tools *only* is recommended!



Futureguard Building Products

101 Merrow Road, Auburn, Maine 04210

www.futureguard.net

PPV2

6

Orient the Upper Door Track so that the raised Screen Door Track is on the outside of the door.



If your door is equipped with a Transom Window section, you will receive part number **FG211**. This piece will have both a raised Screen Door Track and weepholes punched at each end to help identify the 'out' side.



Panels without a Transom Window section will receive part number **FG210**. Use the raised Screen Door Track to determine the 'out' side.

7

Loosely screw **F17B** Square Nuts onto the protruding bolts at each end of the Upper Door Track, leaving enough room for the nut to slide into the channel in the Verticals.

8

Slide the Upper Door Track onto the Verticals so that both Square Nuts are captured inside the Vertical channels. Take care that the screen channel is facing outward.

9

If there is no Transom Window section, the Upper Door Track should be fastened so that it is flush with the top of the Vertical rails. Proceed directly to Step 15



10

If your room is equipped with a Transom Window section, slide the Upper Door Track past the top of the Vertical rails

11

Install the Screen Mullion onto the Mullion Post in the Upper Door Track.

12

Loosely screw **F17B** Square Nuts onto the protruding bolts at the end of the Upper Horizontal, leaving enough room for the nut to slide into the channel in the Vertical.

13

Slide the Upper Horizontal onto the Verticals so that both Square Nuts are captured inside the Vertical channels. Take care that the screen channel is facing outward, and that the Screen Mullion captures the Mullion post



14

Tighten the bolts to secure the Upper Door Track and Upper Horizontal to the Verticals. Be sure that the Upper Door Track and Upper Horizontal do not rock out of square as you tighten them.

Do not over tighten! Maximum of 10ft/lbs! The use of hand tools *only* is recommended!

15

Stand up the door assembly and attach the Vertical Channels to the previously installed panels in the predrilled locations using **F25** bolts and **F17B** Square Nuts.

If the door assembly is attaching directly to the structure rather than other Porch Panels, follow the standard Panel securing procedure outlined on Pages 6 & 7 to secure the door assembly at the top, bottom, and sides.

16

Thoroughly clean the weephole channels, and weephole covers with the provided alcohol wipe. Then, seal the weephole channels with the provided silicone. Apply a thin bead along the bottom of the channel against the bracket, taking special care to seal around the bolt.

Remove any excess silicone.



17

Install the plastic weephole cover by peeling the protective film from the tape then inserting the cover into the channel so the spout is oriented to the outside of the panel and is facing down.



18

Snap the vertical **FG200** & **FG201** Fastener Channel Covers into place, making sure they are oriented so that the door interacts properly with its latch. Secure in place using **F19** Phillips screws in their pre drilled locations.



If the door is equipped with Transom Windows, snap the vertical **FG200** & **FG201** Fastener Channel Covers into place. Secure in place using **F19** Phillips screws in their pre drilled locations

17

Install the Door Sashes. Press the upper edge of the Door Sash into the Upper Door Track and push the lower edge onto the Lower Door Track.



Orient the doors so that the handle mechanism will interact properly with the Latch, if equipped.

18

Install the handle on the door in the pre-drilled location. Insert the screws using the square drive bit.



Orient so that the key slot is on the outside of the panel and the lock mechanism will interact properly with the latch.



19

Install the Door Latch. Using the 1/8 drill bit, drill two holes for the screws that will secure the Latch to the channel cover. Insert the screws using the square drive bit, but do not tighten.



20

Adjust the Latch to the proper height to capture the door handle mechanism, then fully tighten the screws.



21

Secure the fixed section of the door by screwing two F9 fasteners through the fin on the vertical insert and into the door. Place one fastener approximately 2 inches from the bottom and one approximately 2 inches from the top.



SummerSpace Panel Trim

- SummerSpace offers an optional two-piece trim system for finishing the edges of the panels for a seamless, modern look. The instructions below will outline its use and assembly.
- 1 Cut the trim to length to fit the opening around the perimeter of the panel.
 - 2 Secure the U-shaped trim to the outside of the panel, so that it fills the gap between the panel and the mounting surface. This can be done with self-drilling screws, or with predrilling and standard sheet metal screws.
 - 3 Snap the outer face of the trim onto its previously installed mate for a finished look with no exposed fasteners.

