

XCEED PVC Lap Siding

General Guidelines

All designs should be reviewed by a licensed engineer or architect.

- Always reference local building codes, use materials that comply with local building codes and meet VERSATEX Installation Recommendations.
- Install XCEED siding horizontally, never vertically.
- XCEED siding should never be installed at temperatures below 32 ° F.
- Versatex Stealth Trims have been designed specifically for XCEED Siding
- Use Versatex PVC Stealth Starter/Skirtboard or metal starter strip.
 - It is recommended to mark where rabbet pocket terminates within Trim and Corners prior to XCEED Installation to ensure proper expansion gaps are left inside rabbets.
- XCEED must be installed into 2x min. framing members at a MAX SPACING of 16" ON CENTER.
- Properly flash the exterior of the area to be sided (Corners, windows, doors, etc.).
- If XCEED is being installed over concrete, block, brick or stone, the wall must have ¾" min. furring strips added at a max spacing of 16" on center to achieve proper fastening. Coastal/High Wind applications require 16" OC spacing into 1-1/2" actual framing.
- XCEED must be installed over an approved weather resistant and drainable barrier or house wrap.

TIP: For increased weatherability, apply adhesive-backed Ice and Water Shield (24" to 36" wide) around outside and inside corners, windows, light blocks, vents, and other wall penetrations.

Storage and Handling

- If possible, store XCEED indoors, XCEED can be stored outside if kept in a cool, dry place, out of direct sunlight, on the skid it was shipped on, and inside its original packaging.
- Do NOT stack XCEED more than 3 skids high.
- XCEED must be stored horizontally. Avoid direct contact with the ground.
- When possible, carry product on its edge to minimize deflection.

Recommended Fasteners

- Fasten XCEED Lap siding with stainless steel or corrosion resistant nails or screws.
- Nails must be able to penetrate the framing member a minimum of 1-1/4".
- Recommended Nails: Min. 2" stainless steel or galvanized roofing nail with head diameter 3/8" min.
- Recommended Screws: Min. 2" stainless steel or galvanized screw with head diameter 3/8" min.

- For installation of XCEED into a metal framing system, use a self-tapping corrosion-resistant screw.

Cutting and Drilling

- Cross Cutting:
 - To prevent chipping, use a power saw equipped with a fine-tooth blade. Blades with 60 or 80 teeth are optimal.
- Ripping:
 - Use a power saw equipped with a fine-tooth blade (60 - 80 tooth).
- Drilling:
 - Use standard wood working steel twist drill bits which allow for adequate chip removal to reduce heat buildup and chip re-welding.

TIP: When installing auxiliary items (Mailboxes, Shutters, etc.) over XCEED Siding, be sure to pre-drill holes slightly larger than the fastener being used to allow for natural expansion and contraction.

Installation Guidelines

- Versatex Recommends installing Versatex Stealth Profiles (trim, skirtboard, hidden fastener trim and hidden fastener corners) prior to installation of XCEED Lap Siding.
- For ease of installation, Versatex Stealth Corner Profiles should be installed after the siding to ensure proper depth within the rabbet.

Metal Starter

- Once you have established the location of the first course of XCEED Lap Siding, mark a level line 3-5/8" above where the desired bottom edge of siding will sit. Align the top of the metal starter strip with the level line created.
- When using a nominal 4" Stealth Corner, leave a minimum of 3" between the metal starter strip and any building corner.
- When using a nominal 6" Stealth Corner, leave a minimum of 5" between the metal starter strip and any building corner.
- Fasten the metal starter strip to the wall every 8" on center. Be sure to secure tightly to framing members (NOTE: Fastening into sheathing is not an acceptable installation method).
- For runs longer than one metal starter strip, leave a 1/4" gap between starter strips.
- To ensure you hit the first framing member and each thereafter, follow the guidelines below for precutting each course starter piece of XCEED Lap Siding.
 - Find the first framing member after the termination of the Stealth Trim
 - Measure from the center of this framing member to the inside of the stealth trim pocket (A)
 - Subtract the recommended gap (Denoted X in equation) from this measurement. (Chart below) ($A - X = B$).

- From the center of the second pre-cut nailing slot, measure (B) toward the factory cut edge and mark the siding.
 - This allows the second nailing slot to fall directly on the first framing member after the stealth trim, and each framing member thereafter.
 - Cut the siding to length.
- Engage the lap siding onto the metal starter strip. Slide the lap siding horizontally into the stealth trim pocket, be sure to leave the proper gap between the siding edge and the interior edge of the stealth trim pocket.
 - This allows for linear expansion and contraction without compromising the structural integrity of the siding.
- Ensure the first piece of XCEED Lap Siding is properly seated into the metal starter and is level on the wall.
- Fasten using recommended fasteners.
- Be sure to leave a 1/32" gap between the nail head and the nail hem. This allows the XCEED Lap Siding to free float horizontally to accommodate any expansion and contraction within the previously installed stealth pocket trim.
- When possible, fasten through the center of the factory-provided nail slots.
- Fasteners must penetrate the framing member a minimum of 1-1/4".
- To ensure each course of siding is level, be sure to properly seat the hook of the new row into the nail hem (or starter strip) of the course below.
- Calculate cut "C" value for future rows: ($C = 16 - B$)
- To find the starter length for subsequent rows use the C value from above and the following equations. In the case where the corner or trim is to the left, measure from the right-hand side of the piece of siding.
 - Row 1: Piece Length = $192" - C$
 - Row 2: Piece Length = $160" - C$
 - Row 3: Piece Length = $128" - C$
 - Row 4: Piece Length = $96" - C$
 - Row 5: Piece Length = $64" - C$
 - Row 6: Piece Length = $32" - C$
- Repeat rows 1 - 6 to complete the wall.
- XCEED siding starter pieces should never be shorter than 32" unless required due to wall penetrations.
- XCEED siding must be fastened to a minimum of two framing members when at lengths of 32".

NOTE: XCEED IS NOT TO BE FASTENED INTO SHEATHING. ALL FASTENING MUST PENETRATE A FRAMING MEMBER.

- SEE TIP BELOW FOR INSTALLING AT DIFFERENT TEMPERATURES
- For runs that are 3 boards or longer (approx. 48' or longer) the center nail slot of the center board must be double fastened within the same nail slot (1 nail to the far left of the nail slot and 1 nail to the far right of the nail slot). This ensures that this course of siding expands and contracts equally in both directions.

- Shimming may be necessary for wall irregularities. Accommodate the shimming with building code approved materials.
- When joining 2 pieces together, it is recommended that a fastener is placed through the nail slot into stud or sheathing on each piece immediately to the right/left of the nail hem bracket. (Only acceptable time to fasten into non-framework).

Versatex PVC Skirtboard Applications

- Mark a level line where you wish to have the bottom of the PVC skirtboard to begin on the wall. Align the bottom of the PVC skirtboard with the level line created.
- When using the 3/4" PVC skirtboard in conjunction with 5/4" Versatex PVC Stealth Trim or Corners, seat the PVC skirtboard into the stealth pocket leaving the gaps provided below in the temperature chart.
- Fasten the PVC skirtboard to the wall, be sure to secure tightly to framing members (NOTE: Fastening into sheathing is not a form acceptable installation by Versatex).
- Recommended Fastener for PVC skirtboard: Cortex Screws and Plugs that achieve a minimum framing member penetration of 1-1/4".
- For runs longer than 1 PVC skirtboard, create a shiplap joint, glue the two skirtboards together with a Versatex Recommended PVC adhesive and double fasten on each side (1st fastener 1 inch from the edge, 2nd fastener 2-3" from the edge)
- Complete installation leaving the proper gap between the terminating edge of the PVC skirtboard behind the stealth pocket.
- To ensure you hit the first framing member and each thereafter, follow the guidelines below for precutting each course starter piece of XCEED Lap Siding.
 - Find the first framing member after the termination of the Stealth Trim
 - Measure from the center of this framing member to the inside of the stealth trim pocket (A)
 - Subtract the recommended gap from this measurement 'X'. (Chart below) ($A - X = B$).
 - From the center of the second pre-cut nailing slot, measure (B) toward the factory cut edge and mark the siding.
 - This allows the second nailing slot to fall directly on the first framing member after the stealth trim, and each framing member thereafter.
 - Cut the siding to length.
- Place the lap siding onto the PVC skirtboard, be sure to fully seat into place. Slide the lap siding horizontally into the stealth trim pocket, be sure to leave the proper gap between the siding edge and the interior edge of the stealth trim pocket. (See chart below).
 - This allows for linear expansion and contraction without compromising the structural integrity of the siding.

- Ensure the first piece of XCEED Lap Siding is properly seated into the PVC skirtboard and is level on the wall.
- Fasten using recommended fasteners.
- Be sure to leave a 1/32" gap between the nail head and the nail hem. This allows the XCEED Lap Siding to free float horizontally to accommodate any expansion and contraction within the previously installed stealth pocket trim.
- When possible, fasten through the center of the factory-provided nail slots.
- Fasteners must penetrate the framing member a minimum of 1-1/4".
- To ensure the courses of siding begin and stay level, be sure to properly seat each row into the previous course or when starting into the skirtboard.
- To find the starter length for subsequent rows use the C value from above and the following equations. In the case where the corner or trim is to the left, measure from the right-hand side of the piece of siding.
 - Row 1: Piece Length = 192" - C
 - Row 2: Piece Length = 160" - C
 - Row 3: Piece Length = 128" - C
 - Row 4: Piece Length = 96" - C
 - Row 5: Piece Length = 64" - C
 - Row 6: Piece Length = 32" - C
- Repeat rows 1 - 6 to complete the wall.
- XCEED siding pieces should never be shorter than 32".
- XCEED siding must be fastened to a minimum of two framing members when at lengths of 32".
- When joining 2 pieces together, it is recommended that a fastener is placed through the nail slot into stud or sheathing on each piece immediately to the right/left of the nail hem bracket. (Only acceptable instance to fasten into non-framework).

NOTE: XCEED IS NOT TO BE FASTENED INTO SHEATHING. ALL FASTENING MUST PENETRATE A FRAMING MEMBER

- SEE TIP BELOW FOR INSTALLING AT DIFFERENT TEMPERATURES
- For runs that are 3 boards or longer (approx. 48' or longer) the center nail slot of the center board must be double fastened within the same nail slot (1 nail to the far left of the nail slot and 1 nail to the far right of the nail slot). This ensures that this course of siding expands and contracts equally in both directions.
- Shimming may be necessary for wall irregularities. Accommodate the shimming with building code-approved materials.

TIP: Chart for Installation at Different Temperatures

Temperature (°F)	Gap Between Stealth Pocket and Siding
Below 49	3/4" (0.750")
50 - 79	1/2" (0.500")
Above 80	1/8" (0.125") MAX.

Joining Two XCEED Siding Pieces Together

- Two pieces of siding are joined together by the Versatex approved Nail Hem Bracket and 4 Screws (sold separately).
- Tightly butt together the two pieces of siding before attaching the nail hem bracket. Square cut edges are critical for a tight joint.
- Center the Nail Hem Bracket between the two connecting pieces and fasten using the provided screws.
- Be sure the 4 screws are fully seated against the nail hem bracket but not overdriven such that they penetrate the substrate.
- Fasten through the nail slot immediately to the right and left of the nail hem bracket with a recommended fastener (into sheathing is acceptable for this location).

TIP: For increased weatherability, when possible, avoid the placement of joined pieces of siding above and below windows and above doors.

NOTE: Overdriven screws that penetrate a substrate will restrict natural movement of the XCEED Siding and may result in product deformation, voiding the warranty.

Nail Hem Bracket Information

- The Kit includes 50 metal brackets and 220 screws.
- Coverage: Approx. 6 squares per kit of 4-1/2" reveal XCEED Plank Siding.
- Failure to use the Versatex approved nail hem bracket and screws will void the warranty.

Potential Butt Joint Gapping Causes

- Nail Hem Bracket installed improperly.
- Missing Nail Hem Bracket
- Planks were not butted tight together at the time of installation.
- Non-square end cuts.
- Siding piece tightly fastened along the course - inhibiting natural movement.
- Runs longer than 48' not pinned properly in the center.
- Improper expansion gaps behind stealth trims.

Finishing the Final Course / Stealth Frieze Board

- If the final course of XCEED Siding must be cut to width (not a factory width piece) follow the instructions below to ensure proper installation.
- Versatex recommends finishing the top course of XCEED Lap Siding with the XCEED Stealth Frieze Board (Available in 4" and 6" widths).
- Cut siding piece to width, leaving a maximum of 1/8" between the interior edge of the Frieze Board stealth pocket and the top of the last piece of siding.
- To keep proper plank pitch, a piece of pressure treated lumber or PVC trim should be used behind the cut edge of the final course.

- Properly seat the final piece into place, ensuring the boards lock together.
- Install the XCEED Stealth Finish Trim above the final course of siding using Cortex Screws and Plugs that achieve a minimum framing member penetration of 1-1/4".

Repairing Damaged Sections of Siding

- Replace the damaged section when at midpoint temperature for your location.
- Using an oscillation tool and a wood blade, cut the damaged panel horizontally within 1" from the panel above. Make another cut 1" down from the previous cut to remove the center section.
- Carefully remove the damaged panel by lifting and slightly tilting towards installer.
- Using a thin, flat prying tool remove the plank from the nail hem bracket. (Use an oscillation tool with a metal blade to cut the nail hem bracket screws and nail hem bracket if unable to successfully pry off).
- Using an oscillation tool and a metal blade, cut the damaged panel fasteners to release plank from the wall.
- Remove the top portion of the damaged panel.
- Trim the new panel to width.
 - Rip panel by cutting off from the top by the nail hem area. Cut 7/8" down from the nail hem lock (Cut along the bottom of the nail slot). This will allow the panel to be inserted and locked into place.
- Mark stud locations on the face of the new plank.
- Insert the new panel and set into place, ensuring the panels lock together.
- Within 1/2" from top edge, face nail the siding using min. 2" - 16 ga trim nails, be sure to fasten into framing members.
- Fill nail holes with a color matched wax stick or paintable filler/caulk.

Recommended Sealants

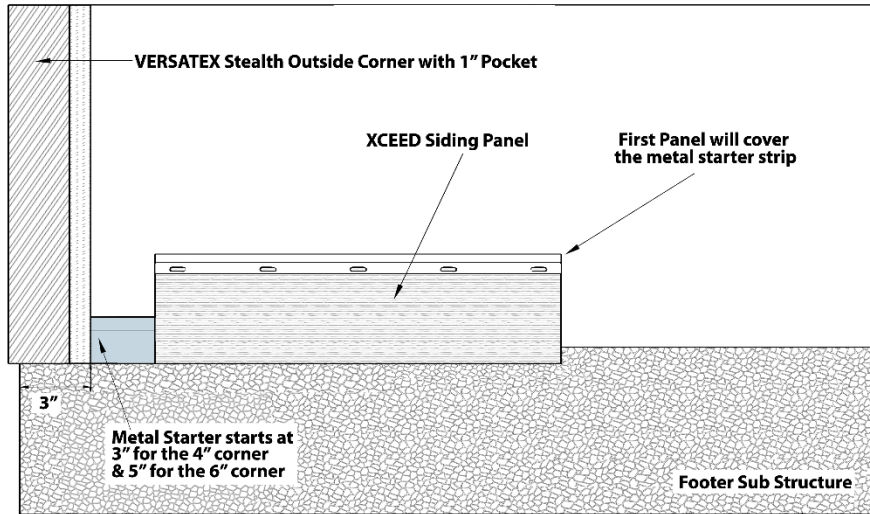
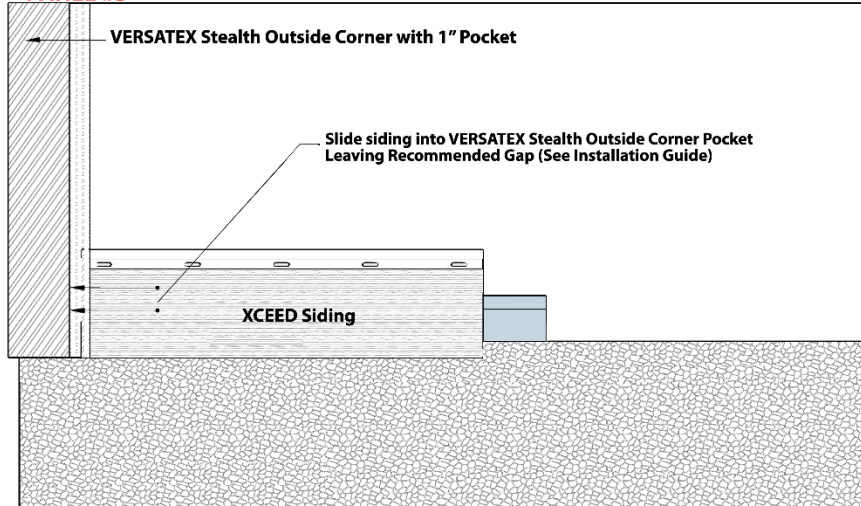
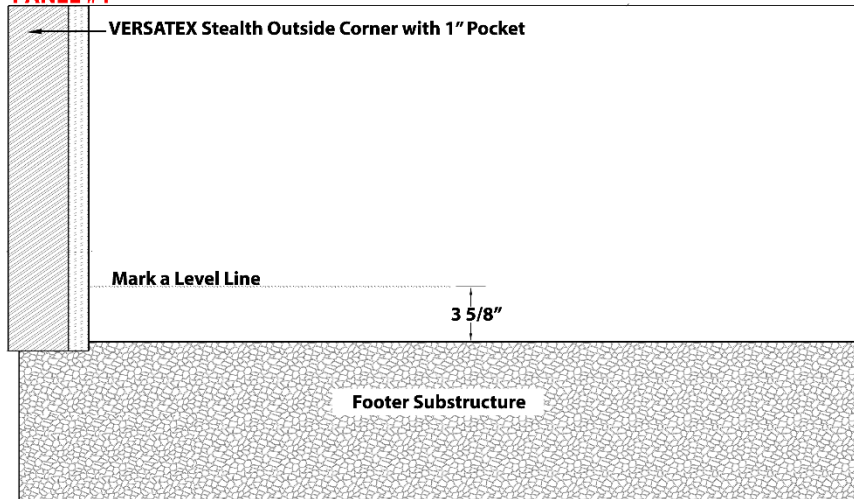
- NPC Solar Seal # 900 (with associated color standard #)

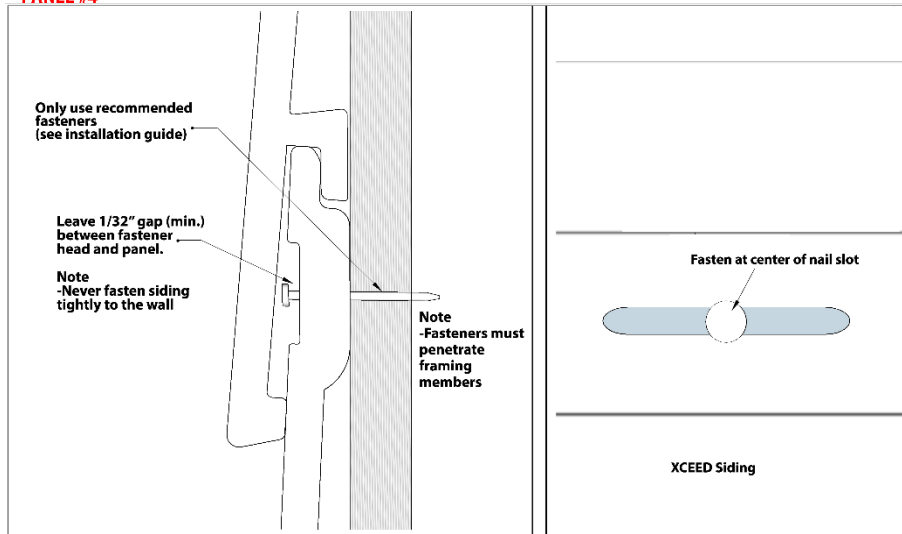
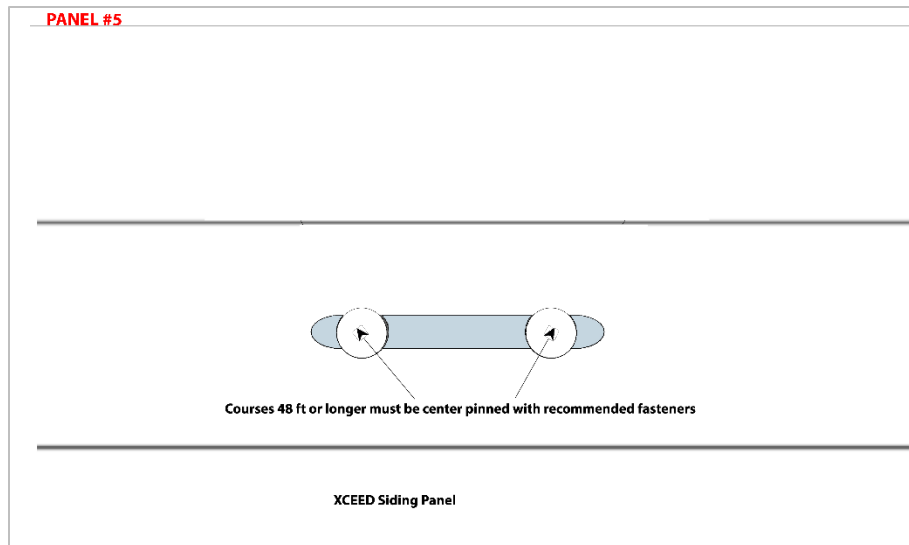
XCEED Color	NPC Standard #
Vail White	53
Monument Grey	202
Mojave Tan	32
Centennial Stone	326
Heritage Blue	272
Sequoia Green	06

- Colors are available to purchase through local distribution. For distributor locations please visit Versatex.com (WHERE TO BUY button) or contact Versatex Building Products at 724.857.1111

For questions regarding XCEED PVC Lap Siding installation please contact the Versatex Engineering Department at: 724.857.1111

XCEED by VERSATEX may not be suitable for every application, and it is the sole responsibility of the installer to be sure that XCEED by VERSATEX is a fit for the intended use. Since all installations are unique, it is also the installer's responsibility to determine specific requirements regarding each siding application.

PANEL #2**PANEL #3****PANEL #1**

PANEL #4**PANEL #5****PANEL #6**